

# Sharpening Steels & Stones



## Professional Steel, #3 Cut



A Precision Cut Steel can be used to maintain the cutting edge of a knife. A few strokes on either side of the blade, every time the knife is used will maintain blade sharpness and ensure best cutting performance. This steel is highly recommended for use on high quality professional knives that are consistently well maintained.

## "Double Sharp" Steel



The unique "Double Sharp" design combines both the "helical/spiral" and the "precision" cuts. The coarse "spiral" cut is ideal for putting an edge on a blunt (i.e. dull) knife blade. The "precision" cut (or "Continental" cut) has unbroken cuts running the length of the steel blade. In combination, the two cuts help to restore a blunt edge quickly and with continued use, help to maintain the restored edge. The edge will not be as fine as that produced by a precision cut steel.

## Oval Steel



An "Oval Honing Steel" provides a wider sharpening surface than its round counterpart. A few strokes across the steel on each side of the knife blade will maintain blade sharpness and ensure best cutting performance. To keep the cutting edge at peak performance, a steel should be used every time the knife is used.

## Smooth Polished Steel



The mirror like, polished finish of this sharpening steel is perfectly smooth. This very specialized steel is used almost exclusively in the butcher trade. It is used in combination with a #3 cut steel and is strictly meant for honing. This steel will re-align and maintain a razor like edge on an already sharp knife. A few strokes on either side of the knife blade, every time the knife is used will help to maintain the blade edge and maximize cutting performance.

## Diamond Coated Steel



A diamond coated sharpening steel can be used when a honing steel will not work to restore a knife blade. The diamond coating will provide the abrasiveness needed to remove metal from the cutting edge.

CCI Superior Culinary Master<sup>®</sup>  
Available at [www.CCIKnives.com](http://www.CCIKnives.com)

Connect with us:

## SHARPENING STEELS & STONES

### Item #

### Product Details



P-33-SK4-260

10" Steel, "Double Sharp"  
3/8" Diameter Blade  
Poly Handle



P-203-SK4-10

10" Steel, "Double Sharp"  
Poly Handle



P-203-260

10" Steel, Cut #3  
Poly Handle



P-203-SK4-12

12" Steel, "Double Sharp"  
Poly Handle



P-203-310

12" Steel, Cut #3  
Poly Handle



P-203-SK4-14

14" Steel, "Double Sharp"  
Poly Handle



P-203-360

14" Steel, Cut #3  
Poly Handle



EP-203-310

12" Steel, Oval  
Poly Handle  
**Special Order Item**  
**Minimum order of 60 Pieces**



EP-203-360

14" Steel, Oval  
Poly Handle



## SHARPENING STEELS & STONES

### Item #

### Product Details



P-203-10  
SMOOTH

10" Steel, Smooth, Polished  
Poly Handle



P-203-12  
SMOOTH

12" Steel, Smooth, Polished  
Poly Handle  
**Special Order Item**  
**Minimum order of 12 Pieces**



EP-203-260  
CUT#9

10" Professional Steel  
Diamond Coated, Cut #9  
Poly Handle



EP-203-310  
CUT#9

12" Professional Steel  
Diamond Coated, Cut #9  
Poly Handle



EPC-208-310

12" Steel  
Oval, Hollow Core  
Diamond Coated, 800 Grit  
Poly Handle



P-253-260

10" Professional Steel  
#3 Cut  
Full Tang Poly Handle  
**Special Order Item**  
**Minimum order of 12 Pieces**



P-253-310

12" Professional Steel  
#3 Cut  
Full Tang Poly Handle



P-253-360

14" Professional Steel  
#3 Cut  
Full Tang Poly Handle



# SHARPENING STEELS & STONES

## Item # Product Details



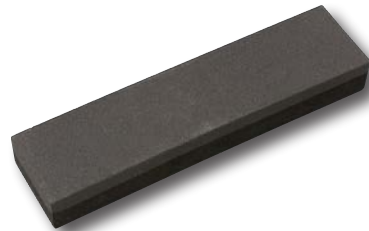
**41999** India Combination Stone  
Made of Silicon Carbide  
100/320 Grit  
8" L x 2" W x 1" H  
(20 cm L x 5 cm W x 2½ cm H)



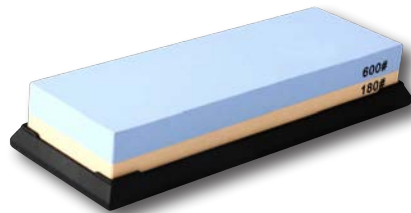
**42990** India Combination Stone  
Made of Silicon Carbide  
100/320 Grit  
8" L x 2" W x 1" H  
(20 cm L x 5 cm W x 2½ cm H)



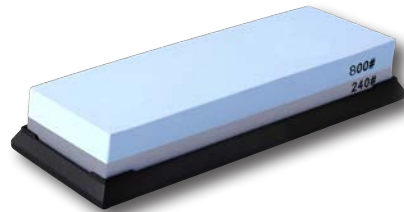
**42991** Crystolon Giant Combo Stone  
Made of Silicon Carbide  
100/320 Grit  
11½" L x 2½" W x 1" H  
(29 cm L x 6 cm W x 2½ cm H)



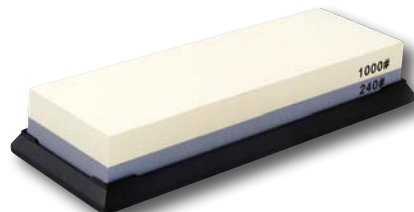
**76846** Sharpening Stone  
Made of Silicon Carbide  
120/240 Grit  
8" L x 2" W x 1" H  
(20 cm L x 5 cm W x 2½ cm H)



**900.WS1.1860** Whetstone  
180/600 Grit  
Includes Anti-Slip Base  
7" L x 2¼" W x 1" H  
(18 cm L x 6 cm W x 2½ cm H)



**900.WS2.2480** Whetstone  
240/800 Grit  
Includes Anti-Slip Base  
7" L x 2¼" W x 1" H  
(18 cm L x 6 cm W x 2½ cm H)



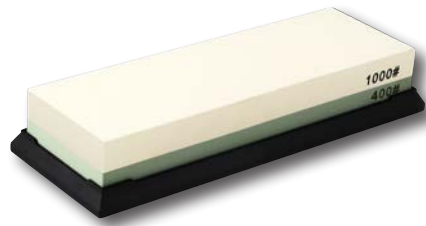
**900.WS3.2410** Whetstone  
240/1000 Grit  
Includes Anti-Slip Base  
7" L x 2¼" W x 1" H  
(18 cm L x 6 cm W x 2½ cm H)



# SHARPENING STEELS & STONES

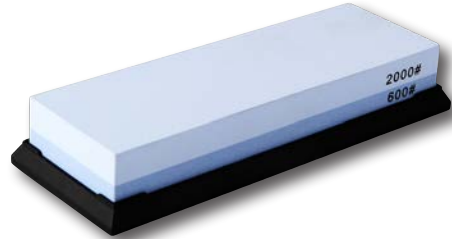
## Item #

## Product Details



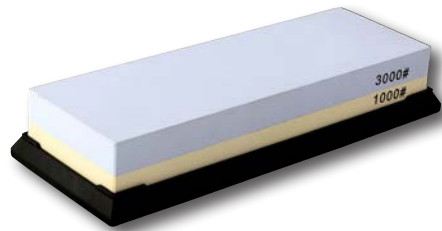
900.WS3.4010

Whetstone  
400/1000 Grit  
Includes Anti-Slip Base  
7" L x 2¼" W x 1" H  
(18 cm L x 6 cm W x 2½ cm H)



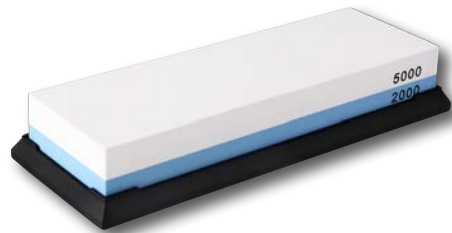
900.WS4.6020

Whetstone  
600/2000 Grit  
Includes Anti-Slip Base  
7" L x 2¼" W x 1" H  
(18 cm L x 6 cm W x 2½ cm H)



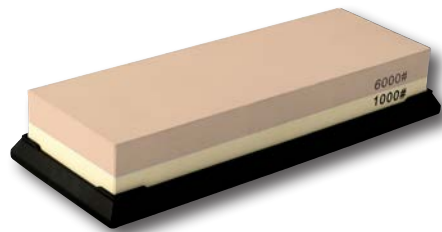
900.WS5.1030

Whetstone  
1000/3000 Grit  
Includes Anti-Slip Base  
7" L x 2¼" W x 1" H  
(18 cm L x 6 cm W x 2½ cm H)



900.WS6.2050

Whetstone  
2000/5000 Grit  
Includes Anti-Slip Base  
7" L x 2¼" W x 1" H  
(18 cm L x 6 cm W x 2½ cm H)



900.WS7.1060

Whetstone  
1000/6000 Grit  
Includes Anti-Slip Base  
7" L x 2¼" W x 1" H  
(18 cm L x 6 cm W x 2½ cm H)



900.WS8.3080

Whetstone  
3000/8000 Grit  
Includes Anti-Slip Base  
7" L x 2¼" W x 1" H  
(18 cm L x 6 cm W x 2½ cm H)

